



TRACK MATTE MODE

NONE

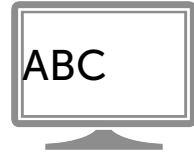
ALPHA

ALPHA INVERT

LUMINOSITY

LUMINOSITY INVERT

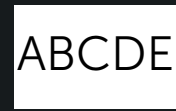
PREVIEW WINDOW



TRACK 2



TRACK 1



EXPLAINED

NONE
Both objects appear. The shape on track 2 covers the text on track 1

ALPHA
tracks reveal what is directly under it. If the green object is above ABC, then ABC will be visible when ALPHA is applied

ALPHA INVERT
conceals what is directly under it. If the green object is above ABC, then ABC will NOT be visible. But DEF will be.

LUMINOSITY
mattes reveal what is white or bright in the track below it. In this case, the white is on top of AB and therefore it comes through as normal. Gray is only 50% "bright" or luminent, so the letters CD are 50% transparent.

LUMINOSITY INVERT
conceals what is white or bright in the track below it. In this case, the white part of the graphic hides the AB. EF are visible because Luminosity invert show things that sit beneath a black object.

Timeline



Ctrl + Period Next clip

Space Bar Play / Pause

Ctrl + Comma Previous clip

Cmd + T Split selected media

Period Step Forward

P Add Placeholder

Comma Step Backward

Cmd + A Select all

Many shortcuts can be reassigned (Camtasia 2020 > Preferences > Shortcuts)